

Jennifer Fyfe

PORTRAIT ARTIST



ABOUT

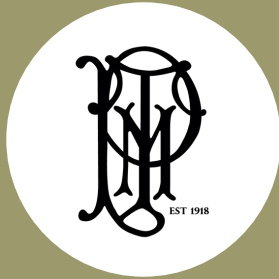
Jennifer Fyfe is a Melbourne oil painter primarily working in portraiture from live subjects. Her work explores contemporary themes of social stories and connection. Fyfe's work is visually easy to interpret and is unique in that it is being created around prioritising exhibition accessibility. Fyfe uses recycled, recyclable and reclaimed objects wherever possible.

www.jenniferfyfe.com

instagram: [@jennifer.fyfe.art](https://www.instagram.com/jennifer.fyfe.art)

imprintevent2025@gmail.com

Aligned with



TWENTY MELBOURNE
PAINTERS SOCIETY



IMPRINT EVENT
& VAS signatory member



Supported by the
CITY OF MELBOURNE ARTS GRANTS

PUBLICATION

EXHIBITION CATALOGUE

descript

ISBN 978-1-7635573-0-7

essay,
academic commentary,
studio images
art work images,
biographical stories

descript

J.FYFE

ACTIVITIES

Workshops:

model programs

Student workshops

Designed around serious tonal study and
colour exploration for VCE folio expansion

Artist workshops for portraiture. Building
on skills in speed and resemblance

Demonstrations:

Live model portrait painting

TAKING
THE
SHOW
ON
THE
ROAD



TRAVELLING
PORTRAITURE

Jennifer is keen to share her portrait work with community organisations. She does not sell her project works but instead, allows each collection to remain a single body of work in order to travel on loan. This enables collaborations within a variety of public spaces building on the themes of each individual project - storytelling, social conscience, connection and more.

Reimagining the portrait

TRADITIONAL PAINTINGS WITH A CONTEMPORARY AESTHETIC

**found,
recycled,
repurposed,
rescued**

connecting
with
community

“ a new way
of seeing
portraiture
and telling
stories

”

*portraits
completed
in only
3.5 hours*

Project DESCRIPTION



READY
FOR EXHIBITION



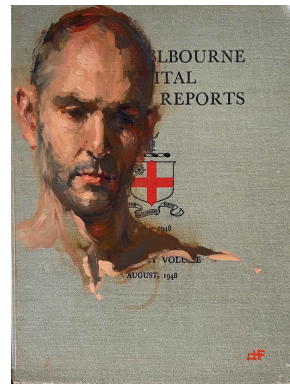
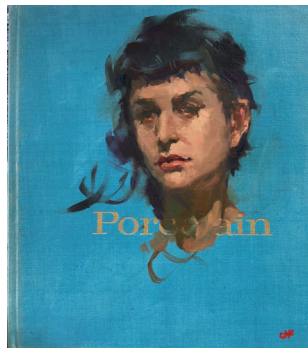
PAINTED BOOKS

Painted on repurposed materials.
Painted from live models in 2.5 and 3.5
hours.
Accompanying biographies printed in ink
and Braille.
Community stories - first responder, knife
craftsman, artist model, gardener,
scientist, teacher...



Telling social stories
& building connection

DESCRIPT



The Accessibility Project

A NEW WAY OF SEEING THINGS

This project seeks to provide greater accessibility for art gallery visitors.

The 'descript' book project involves Braille and large print for the vision impaired and the ability to take books from their frames so that height-restricted visitors are given greater opportunity to see the paintings up close. Fyfe exhibitions will be designed to potentially include a new, innovative device, the result of collaboration between the artist, RMIT University and accessibility advocates to allow height-restricted visitors to view the artworks in a more inclusive manner.

RMIT UNIVERSITY

- Fyfe will be collaborating closely with RMIT to explore the prototype build opportunity
- Having met with the RMIT Partnerships Team to initiate this collaboration, areas of discussion were:
- around working with the student body in a collaborative and mentoring capacity,
- the end-use of the design,
- intellectual property considerations,
- other possible applications for the design beyond the gallery space.
- RMIT Partnerships Team is now taking the project to their Society 5.0 Social Change Initiative to decide the best fit for the study area



<https://www.rmit.edu.au/research/our-research/enabling-impact-platforms/case-studies/society-5-0>

ACCESS ARTS VICTORIA

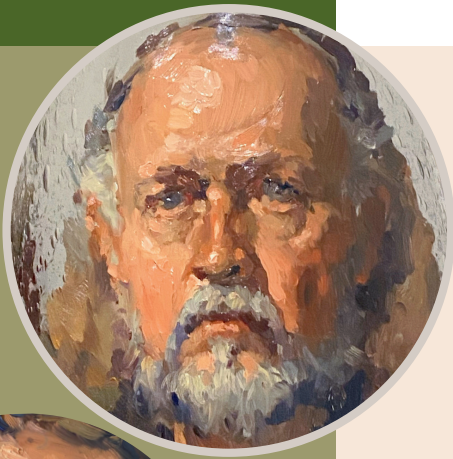
- Discussion around the advisory process and the design options, 'analog' versus high-tech mechanics, height considerations and the consultation process with AAV.

*Exploring the human condition
through paint*

IN THE STUDIO

110 NEW WORKS
IN PRODUCTION

Portraits on repurposed objects.
Painted in 3.5 hours
Exploring themes of social conscience and time.



Jennifer Fyfe

PORTRAIT ARTIST

Objectives

- To bring traditional oil painting to a contemporary audience.
 - To bring depth and meaning to traditional art and reflect current social issues.
 - To question and explore philosophical concepts through art such as belonging, connection and conscience.
 - To make art that is inclusive and accessible.
-

REPRESENTED

**Works held in public
and private collections
in Australia, UK, USA**

ARTISTIC CAREER

- 2019 Winner of the People's Choice Award Rick Amor Self Portrait prize
- 2019 Victorian Artists Society Artist of the year
- 2019 Finalist in the Rick Amor Self Portrait Prize
- 2019 Finalist in the AME Bale Oils Prize
- 2018 Invited to join the Twenty Melbourne Painters Society Inc. est 1918
- 2017 Finalist in the Rick Amor Self Portrait Prize
- 2016 Finalist in the AME Bale Oils Prize
- 2015 Victorian Artists Society Artist of the year
- 2014 Commenced Membership to the Victorian Artists Society

EXHIBITIONS

Oil paintings on linen

Group Exhibitions:

- 2019 - 2024 Annual Group Exhibition Twenty Melbourne Painters Society
- 2020 Poster collection shown Frater and Hammond Galleries East Melbourne
- 2020 'From this Moment' Frater and Hammond Galleries East Melbourne
- 2018 'Here and Now' Steps Gallery Carlton

Solo Exhibition

- 2016 'Moments Captured' Cato Gallery East Melbourne

UPCOMING



<https://www.imprintevent.com/ehibition>

Collaborate

Collaborate as a visual or musical artist

Partner with the accessibility project


Host a workshop

Host a demonstration

Arrange your event against the backdrop of a exhibition

Host an exhibition of a selection of works

Sponsor an event

 imprintevent2025@gmail.com